

CROSSING THE ROAD



Co-lab de INNOVACIÓN con
PROPÓSITO PÚBLICO



THE CHALLENGE

Chile is facing key productive challenges affecting the country's development in several dimensions: slow execution times, obstacles through regulatory systems, and the incorporation of development models with insufficient territorial relevance. Specifically in the public sector, according to the latest report of the National Budget Directorate, there are 40 billion dollars invested in public programs and services whose effectiveness is uncertain. Even though there is a great deal of research and knowledge production in the universities, as well as a set of valuable studies and ideas produced by companies, public institutions and civil society organizations, they are not found in an innovation ecosystem. Therefore the potential contributions are losing the possibility to cross the road from their isolated isolated spaces to impactful collaborative work to address those challenges. In that line the National Strategy for Science, Technology, Knowledge and Innovation for Development (CTCI, 2022) emphasizes the importance of adopting a systemic and long-term perspective that not only addresses sectorial fragmentation but also guarantees the continuity and enhancement of projects of public interest in the territories.

Therefore, the premise of the proposal is that a key to productive development is a point of working with its social and environmental surroundings. Hence, the University of Chile, as the No. 1 Frontier University in the country, proposes the creation of a Technological Innovation Centre called the **Innovation Co-laboratory for Public Purpose**. The distinctiveness of the proposal are the following: a) its build on a polycentric governance model that implements the articulation of academia with business, civil society foundations and public institutions. b) it uses, as a baseline, the existing research in various fields, as the The National Council of Science, Technology, Knowledge, and Innovation for Development (CTCI) in Chile assumes a transdisciplinary approach to research and innovation of high integration, c) it is constituted as an accelerator for the transfer of innovation proposals to the public sector, d) it is a center of innovation, specifically innovation with public purpose, e) its development will be on a smart platform where all open science developments and results will be placed.





THE STRATEGY

Vision:

Become the trusted advisor within collaborative ecosystems for the development of public purpose innovations, through disruptive technological solutions in response to the main challenges of the country's sustainable and productive development.

Mission:

Propel a new technology transfer model to accelerate the sustainable and productive transformation of the country.

General Objective:

Implement disruptive solutions with a public purpose that increase social, economic and environmental value in key productive sectors, catalyzing the production of knowledge from a transdisciplinary approach.

Specific Objectives:

- 🔗 Set a transdisciplinary collaborative ecosystem to address sustainable development across extractive and services sectors
- 🔗 Pursuing ground-breaking curatorship of valuable ideas from the production of knowledge that help reduce costs and increase effectiveness across extractive and services sectors.
- 🔗 Evaluate the systemic effectiveness and implementation of disruptive solutions across lines.
- 🔗 Accelerate the transfer flux through prototyping, validation, scalability and mixed licensing of technological solutions.
- 🔗 Train advanced talent that effectively responds to sectoral requirements.
- 🔗 Promote, from an intersectional gender approach, the addition of value to productive development.
- 🔗 Advocate through a communications strategy to disseminate progress and results in the public sphere
- 🔗 Monitoring and continuously evaluating the quality of progress and results





THE TEAM

The Center will work under the leadership of Ignacio Larraechea as the Executive Director, a PHD in Economics from the Catholic University of Louvain with 40 years of experience working at the intersections of public and private development. For six years he led the ACCION Empresas an entity that represents the World Business Council for Sustainable Development in Chile. He was National Director of National Training and Employment Service (SENCE) from 1996-2000. In the academic field, he served as Dean of the Faculty of Economic and Administrative Sciences of the Central University of Chile and then as Interim Rector of the same University.

The Center will have a Scientific Director as well to coordinate and leverage the Research lines and contributions. The position will be led by Gianinna Munoz, a PhD in Social Work from the University of Bristol, England (2015). She is currently Director of the Department of Social Work at the Faculty of Social Sciences, she has trained and led national and international research teams and has achieved significant international recognition in the discipline of Social Work.

Claudio Maggi will be in charge as Transference Manager will be key to propel a new technology transfer model to accelerate the sustainable and productive transformation of the country. He is an Industrial Civil Engineer and Master of Engineering Sciences from University of Chile. He currently serves as CORFO's Territorial Development Manager. Previously, he has worked as Development Manager at Fundación Chile, Open Beauchef Executive Director, and consultant for several International Organizations.

The University Innovation Director, Anahi Urquiza will also be part of the core team, providing the strategic connections that University of Chile has built with National and International Institutions.





THE RESEARCH LINES

Territorial Development:

Framed within the vision of territorial justice, represents an opportunity to transform social, economic, and environmental challenges into more equitable and sustainable territories.

Gender Equality:

Understood from an intersectional perspective. This allows understanding the dynamics of inclusion and exclusion according to their context and transferring not only disruptive but also inclusive solutions, resulting in a greater potential for scalability for the rest of the areas. At the same time, gender-specific challenges will be considered in order to provide solutions and training to problems that disproportionately affect women and other genders.

Healthcare Economics:

This area addresses the challenges related to health systems, considering their impacts on social, productive and environmental development, as well as the opportunities offered by information technologies. It also integrates an intersectional understanding of health by analysing the inequalities associated with the distinction between public and private, rural and urban health services. It also conceives health not only from its physiological dimension, but also from its mental dimension.

Training and Human Capital:

This line aims to design the center's training and education programs, and develop research around challenges present in the productive sectors that can be addressed through innovations in training and human capital development. All of this is carried out from a perspective of continuous and effective training.

Conflict and Inequalities:

aims to promote innovation to respond to the social challenges faced by the productive sectors linked to CLIPP in their territories. It also seeks to address the social conflicts that emerge as a consequence of unsustainable development.





THE RESEARCH LINES

New Models of Transfer:

Develop socially responsible solutions to the challenges of a technology-driven world based on technology transfer models which accelerate the sustainable and productive transformation of the country. This includes intellectual property management and strategies, domestic and international technology transfer mechanisms and solutions. Also considers public interest technology models of licensing.

Information Technologies:

Data, designs, and other information related to inventions or scientific and technical research. Also it includes technical standards, research data, formulas, clinical data, and process information. Technological information is a source of technological intelligence (TI), which is the process of gathering and analyzing data about technological trends and opportunities. It is a key part of technological strategy, and supports technological vigilance and foresight studies.

Quality Implementation:

Aimed at ensuring quality implementation of social programmes and disruptive innovations. It also seeks to analyse the dynamics inherent in the implementation process in order to promote approaches that humanise interventions and consider local contexts. In this framework, it recognises the role of frontline practitioners, who not only face the challenges of implementation, but also act as key agents of innovation.

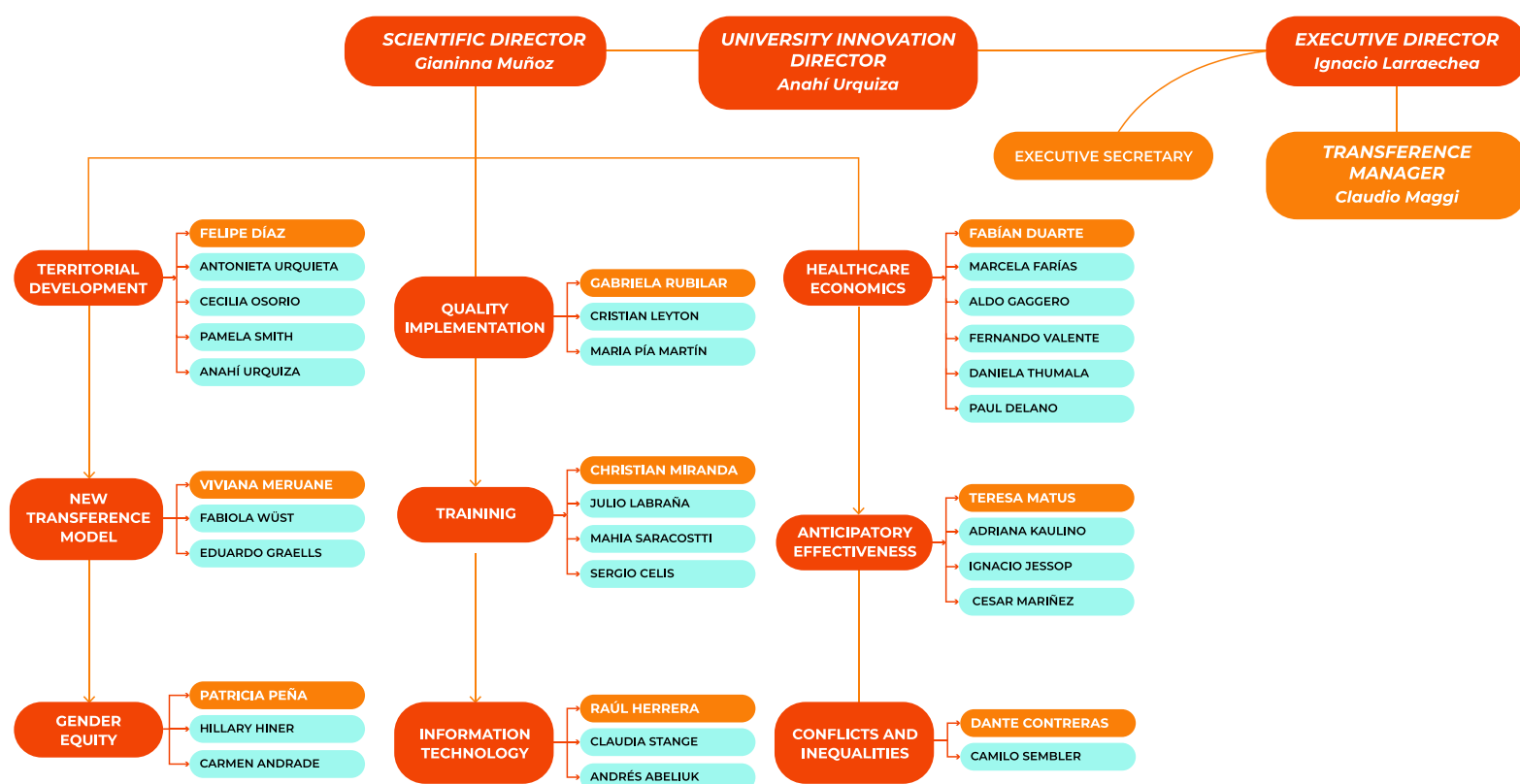
Anticipatory Effectiveness:

Aims to identify critical nodes and promote timely decision-making through a perspective oriented towards understanding the deficits and failures present in the offer, with the purpose of developing innovations. It is also based on anticipation and foresight capabilities, which allow us to design disruptive solutions not only for current social, productive and environmental challenges, but also for those that will arise in the future.





THE RESEARCHERS





THE ECOSYSTEM

🌀 1. *Companies*

Primary sector, specifically in minery, forest and energy, requires efficient operations to remain competitive and environmentally sustainable. Achieving sustainable and productive development requires interdisciplinary research to develop context-specific, data-driven solutions and bring technological transformation. The Center will work with mining companies as Codelco and Anglo American, as well as forestry with CMPC. Companies that associate groups of companies from both the extractive and service sectors: Acción Empresas and Sistema B.

Service companies: Association of Banks and Financial Institutions, Banco Santander, Universia Chile, National Chamber of Commerce (OTIC), Iquique Free Trade Zone.

🌀 2. *NGOs*

Including Corporación Opción, Colegio de Profesores, Community of Solidarity Organizations.

🌀 3. *Public Institutions*

Public Institutions from different management levels including the Ministry of Women and Gender Equity, Ministry of Environment, Ministry of Housing and Urbanism, Sub Secretariats of: Higher Education, Public Health, Social Services of the Ministry of Social Development and Family; National Institute of Statistics and the Eloisa Díaz Clinical Hospital.





EL ECOSISTEMA

4. *Academic Collaborations*

In the development of knowledge production and innovation, the University of Chile will have a team of researchers from 10 Faculties: Physical and Mathematical Sciences, Social Sciences, Economics, Medicine, Dentistry, Science, Communication, Government, Architecture and Urbanism, Institute of International Relations. These faculties have been strengthening academic collaborations for decades and its ecosystem is at the base of The Center resources. There are more than 400 Academic Agreements signed with Regional and International Universities. And at the national level, Associated Institutions that have partnered with CLIPP are the University of Tarapacá, the Anglo American Innovation Foundation and the Renca Municipality Factory. At the international level, we highlight the Universities of Columbia, Berkeley, Leuven, CALTECH, MIT, UCL, Dortmund, Complutense, West Attica, Montreal, UFRJ, UERJ, Buenos Aires, La Plata, UNAM, Monterey and La República.

